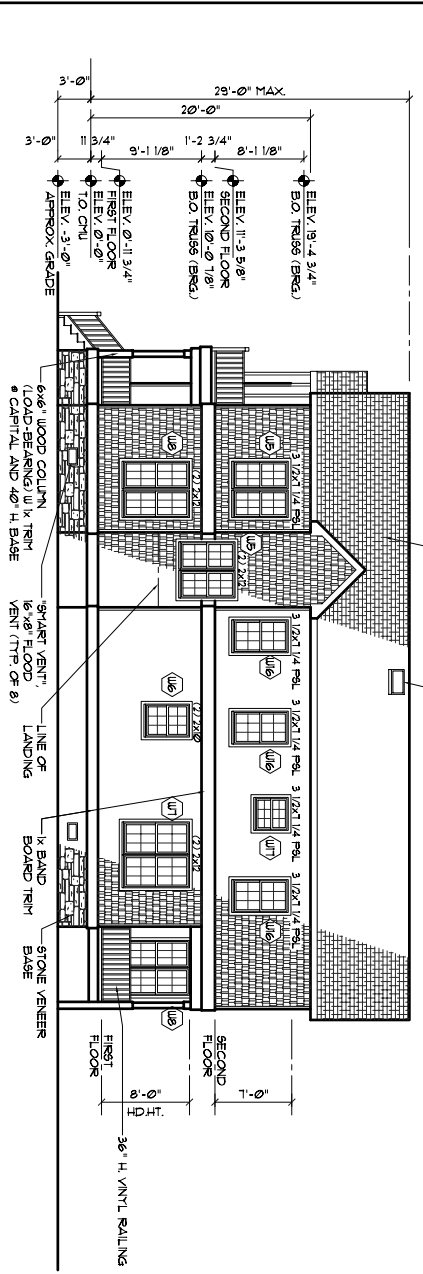
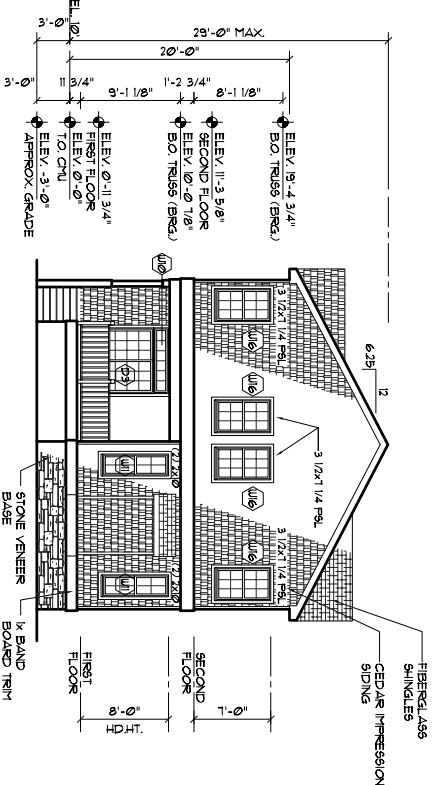


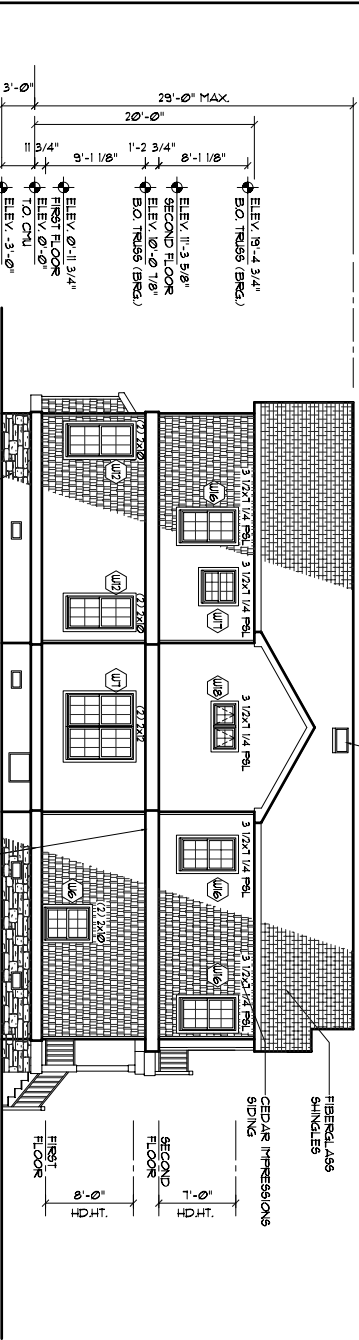
1 FRONT ELEVATION
A-3 1/4"=1'-0"



2 SIDE ELEVATION
A-3 1/8"=1'-0"



3 REAR ELEVATION
A-3 1/8"=1'-0"



4 SIDE ELEVATION
A-3 1/8"=1'-0"

WINDOW SCHEDULE

ALL WINDOWS AND GLASS DOORS SHALL HAVE GLAZED OPENINGS OF AN EQUAL OR GREATER SIZE THAN THE UNGLAZED OPENINGS. FRONT WINDOW DEBERS SHALL MEET THE REQUIREMENTS OF THE LARGE PIGEON TEST OR APPROVED IMPACT RESISTING STANDARD OR ASTM E 1886. ALL WINDOW SILLS MUST BE A MINIMUM SILL HEIGHT OF 24".

2ND FLOOR WINDOWS TO HAVE 1'-0" HEAD HT.

2ND FLOOR WINDOWS TO HAVE 1'-0" HEAD HT.

U1	2016 ARCHTOP								
U2	FIXED 8014 ARCHTOP	DH 12046	NOT USED	DH 12650	DH 12046	DH 3040	DH 3060 TUN **	DH 1660 TUN	OVAL 2050
U3	FIXED 8014 ARCHTOP	DH 3050 TUN **	NOT USED	DH 3050 **	DH 3050	DH 3050	AINING 2020 TUN	DH 1660 TUN	6014 TRANSOM
U4									DH 2060
U5									DH 3060 **
U6									
U7									
U8									
U9									

5 WINDOW SCHEDULE
A-3 1/4"=1'-0"

PROPOSED SINGLE FAMILY RESIDENCE
FOR
M. W. MITCHELL, INC.
108 E. RAMBLER ROAD WILDWOOD CREST, N.J.

GARRAMONE ARCHITECTS, LLC
ARCHITECTS / PLANNERS
51 GASKO ROAD
MAYS LANDING, NJ 08330
(609) 476-2977
(609) 476-4425 (FAX)

JG

NO.	DATE	REVISIONS
DESIGNED	SEAL	
JG		
DRAWN BY		
RP		
CHECKED		
JG		
APPROVED		
JG		
SHEET TITLE		
EXTERIOR ELEVATIONS		
DATE	3/16/07	SHEET NO.
PROJ. NO.	0701	A-3
SCALE: AS NOTED		