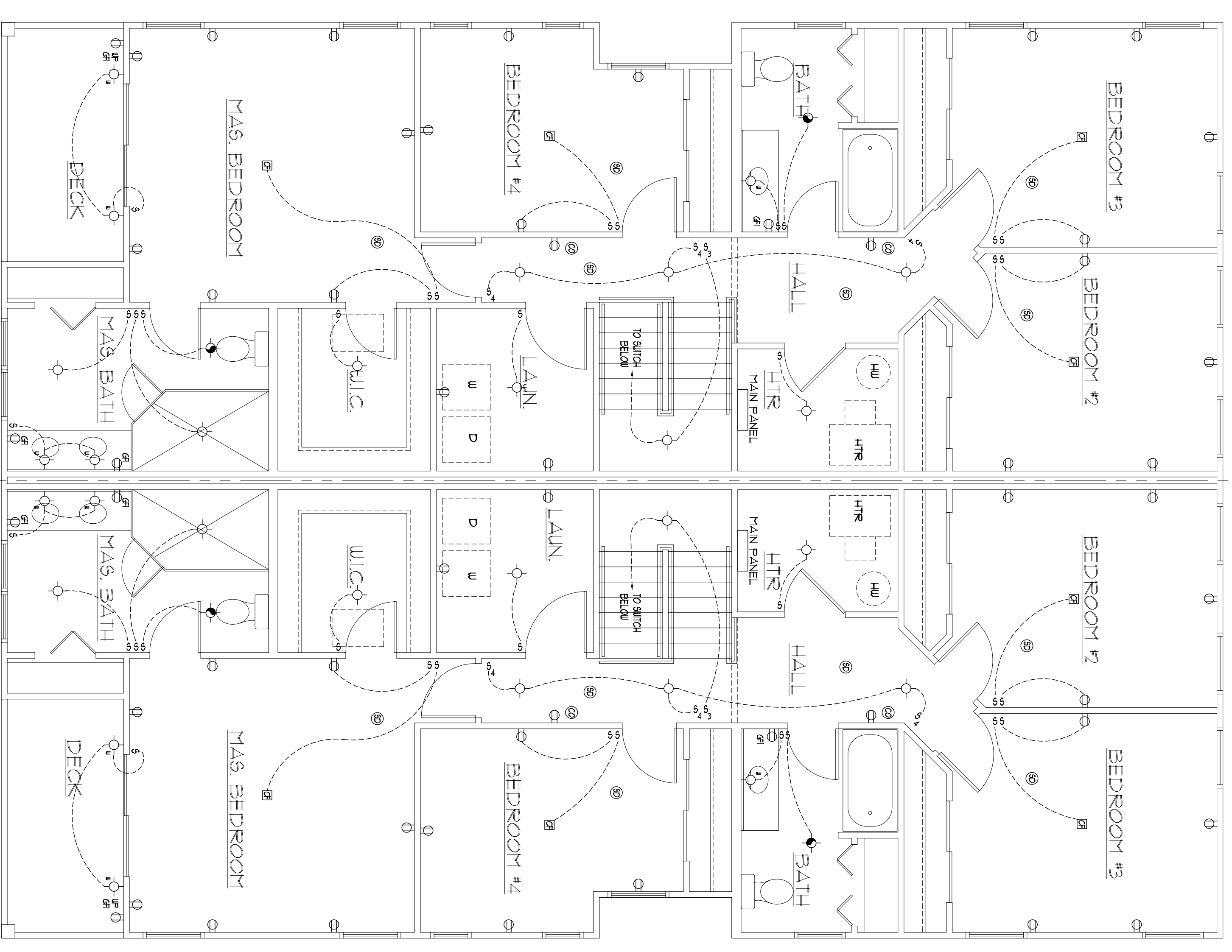


1
FIRST FLOOR
ELECTRICAL PLAN
E-1 1/4"=1'-0"

ELECTRICAL SCHEDULE

- ⊕ OUTLET (COMPLEX RECEPTACLE)
- ⊕ OUTLET, GROUND FAULT INTERRUPT
- ⊕ OUTLET, WATER PROOF
- ⊕ SWITCH
- ⊕ 3-WAY SWITCH
- ⊕ CEILING MOUNTED LIGHT
- ⊕ WALL MOUNTED LIGHT
- ⊕ LIGHT WITH FULL CHAIN
- ⊕ EXHAUST FAN / LIGHT COMBO
- ⊕ SMOKE DETECTOR
- ⊕ CARBON MONOXIDE DETECTOR
- ⊕ CEILING FAN JUNCTION BOX + OUTLET w/ SWITCH CONTROL



2
SECOND FLOOR
ELECTRICAL PLAN
E-1 1/4"=1'-0"

Garramone Architects, LLC expressly reserves its copyright and other property rights to these plans. All designs, specifications and drawings are the property of Garramone Architects, LLC and are to be used only for the project in full or in part, without obtaining the express written approval and consent of Garramone Architects, LLC. These documents shall not be transferred to any unauthorized third party without the same consent.

NO.	DATE	REVISIONS
DESIGNED BY	SEAL	
JG		
DRAWN BY		
RP		
CHECKED		
JG		
APPROVED		
JG		
SHEET TITLE		
ELECTRICAL FLOOR PLANS		
DATE: 6/19/08	SHEET NO.	
PROJ. NO.: 0814	E-1	
SCALE: AS NOTED		

PROPOSED TWO FAMILY DWELLING
FOR
M. W. MITCHELL, INC.
108 E. RAMBLER AVE. WILDWOOD CREST, N.J.

GARRAMONE ARCHITECTS, LLC
ARCHITECTS / PLANNERS

51 GASKO ROAD
MAYS LANDING, NJ 08330
(609) 476-2977
(609) 476-4425 (FAX)

JG