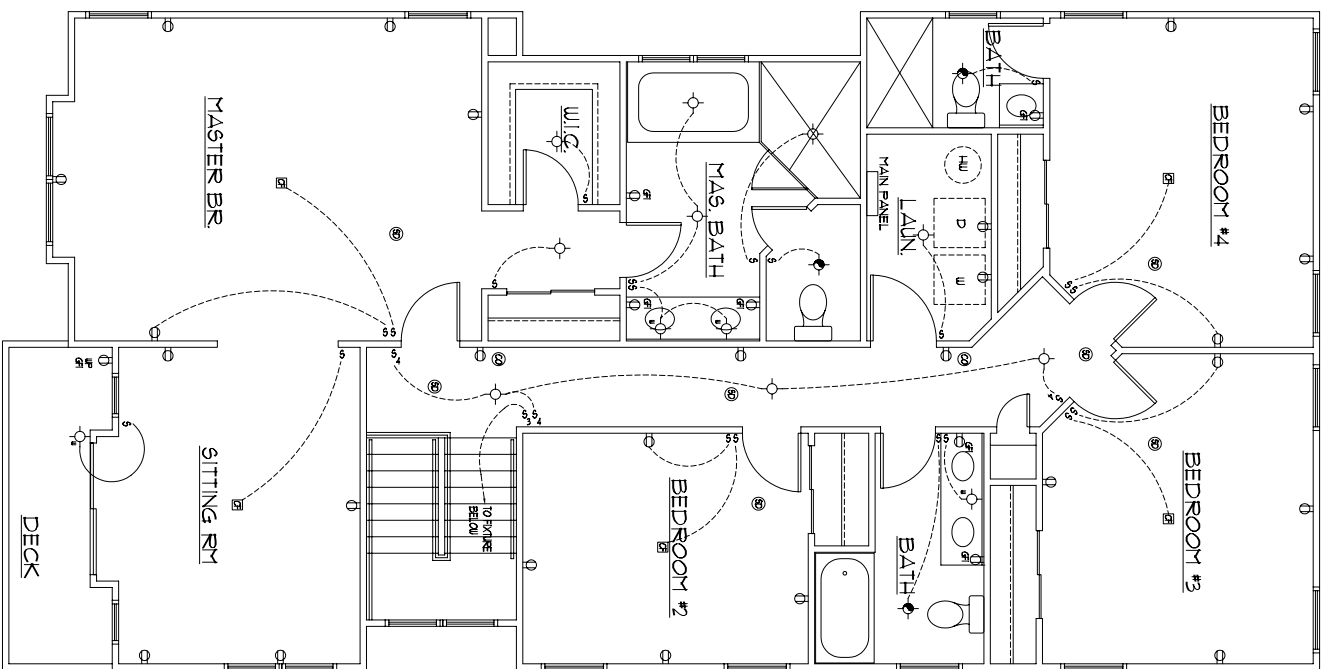


**FIRST FLOOR ELEC. PLAN**  
E-1 1/4"=1'-0"



**SECOND FLOOR ELEC. PLAN**  
E-1 1/4"=1'-0"

**ELECTRICAL SCHEDULE**

- ⊖ OUTLET (DUPLEX RECEPTACLE)
- ⊖ OUTLET (GROUND FAULT INTERRUPTER)
- ⊖ OUTLET (WATER PROOF)
- ⊖ 3-WAY SWITCH
- ⊖ CEILING MOUNTED LIGHT
- ⊕ WALL MOUNTED LIGHT
- ⊕ LIGHT WITH PULL CHAIN
- ⊕ EXHAUST FAN / LIGHT COMBO
- ⊕ SMOKE DETECTOR
- ⊕ CARBON MONOXIDE DETECTOR
- ⊕ CEILING FAN JUNCTION BOX + OUTLET w/ SWITCH CONTROL

NO.	DATE	REVISIONS

PROPOSED SINGLE FAMILY RESIDENCE  
FOR  
**M. W. MITCHELL, INC.**  
108 E. RAMBLER ROAD WILDWOOD CREST, N.J.

**GARRAMONE ARCHITECTS, LLC**  
ARCHITECTS / PLANNERS

51 GASKO ROAD  
MAYS LANDING, NJ 08330  
(609) 476-2977  
(609) 476-4425 (FAX)

JG

DESIGNED BY JG	DESIGNED SEAL
DRAWN BY RP	
CHECKED BY JG	
APPROVED BY JOSEPH GARRAMONE, R.A. NJ AI 08919	
SHEET TITLE ELECTRICAL FLOOR PLANS	
DATE: 3/16/07	SHEET NO.
PROJ. NO.: 0701	E-1
SCALE: AS NOTED	