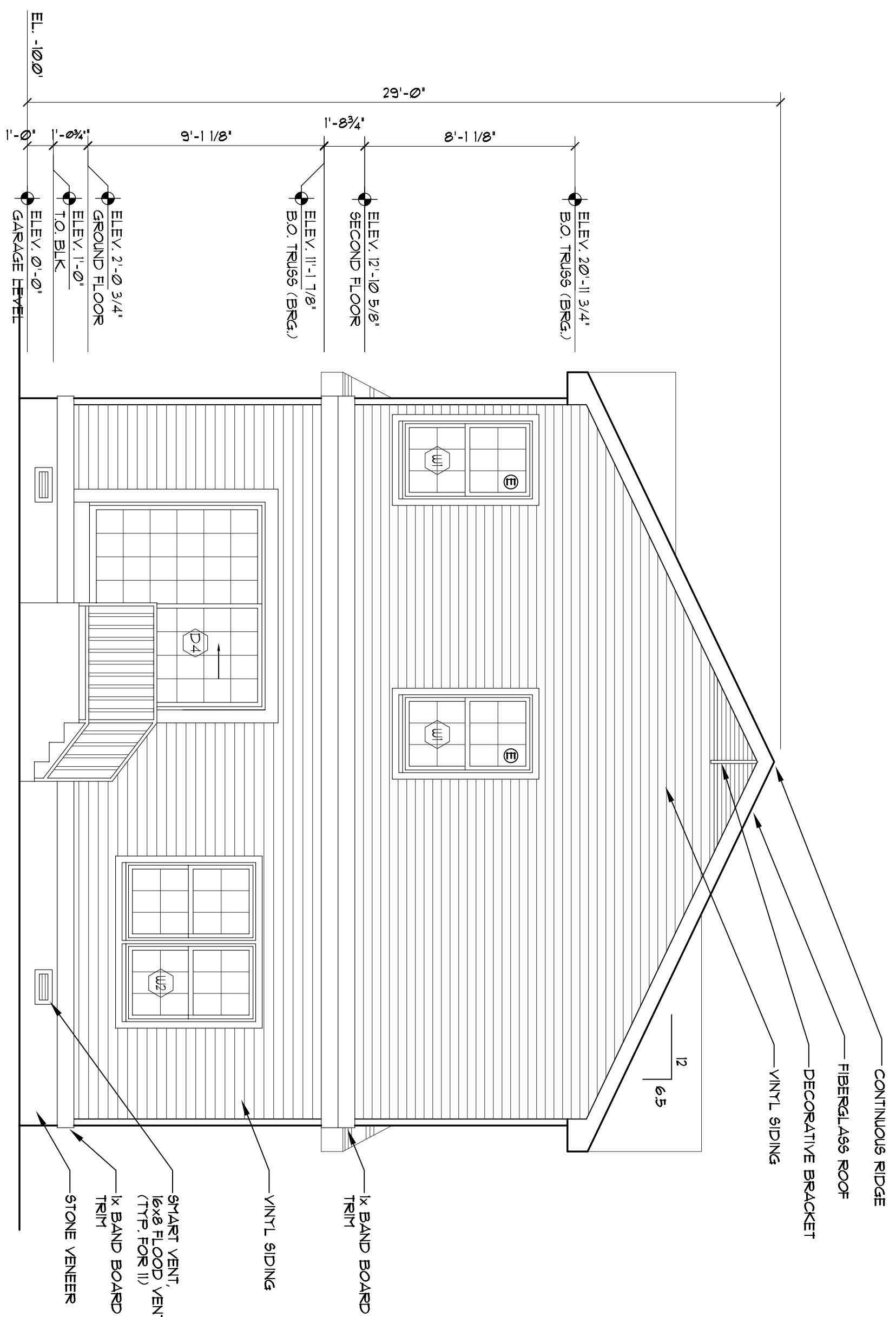
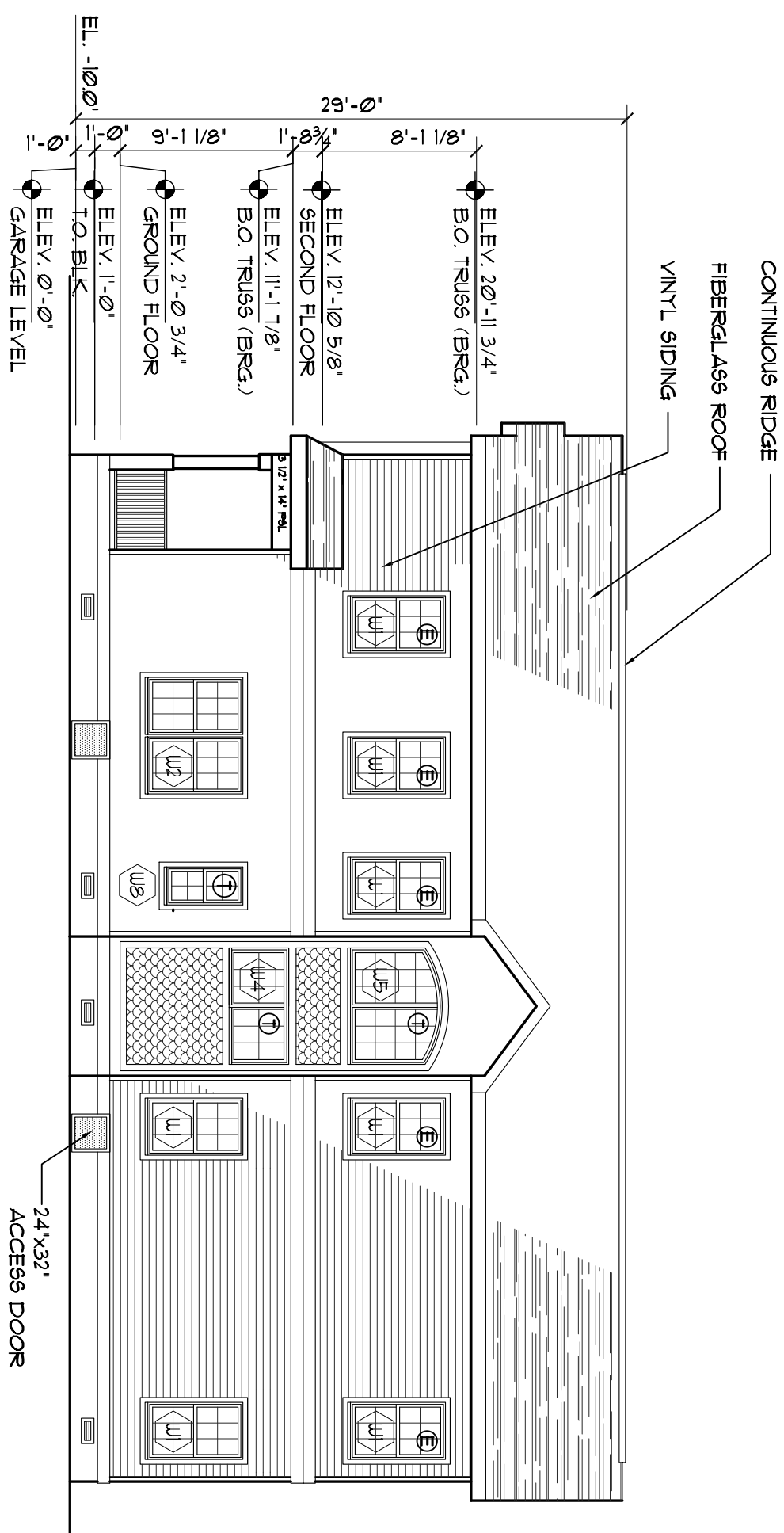


① INDICATES TEMPERED GLASS REQUIRED.  
② INDICATES EDGES WINDOW REQUIRED.

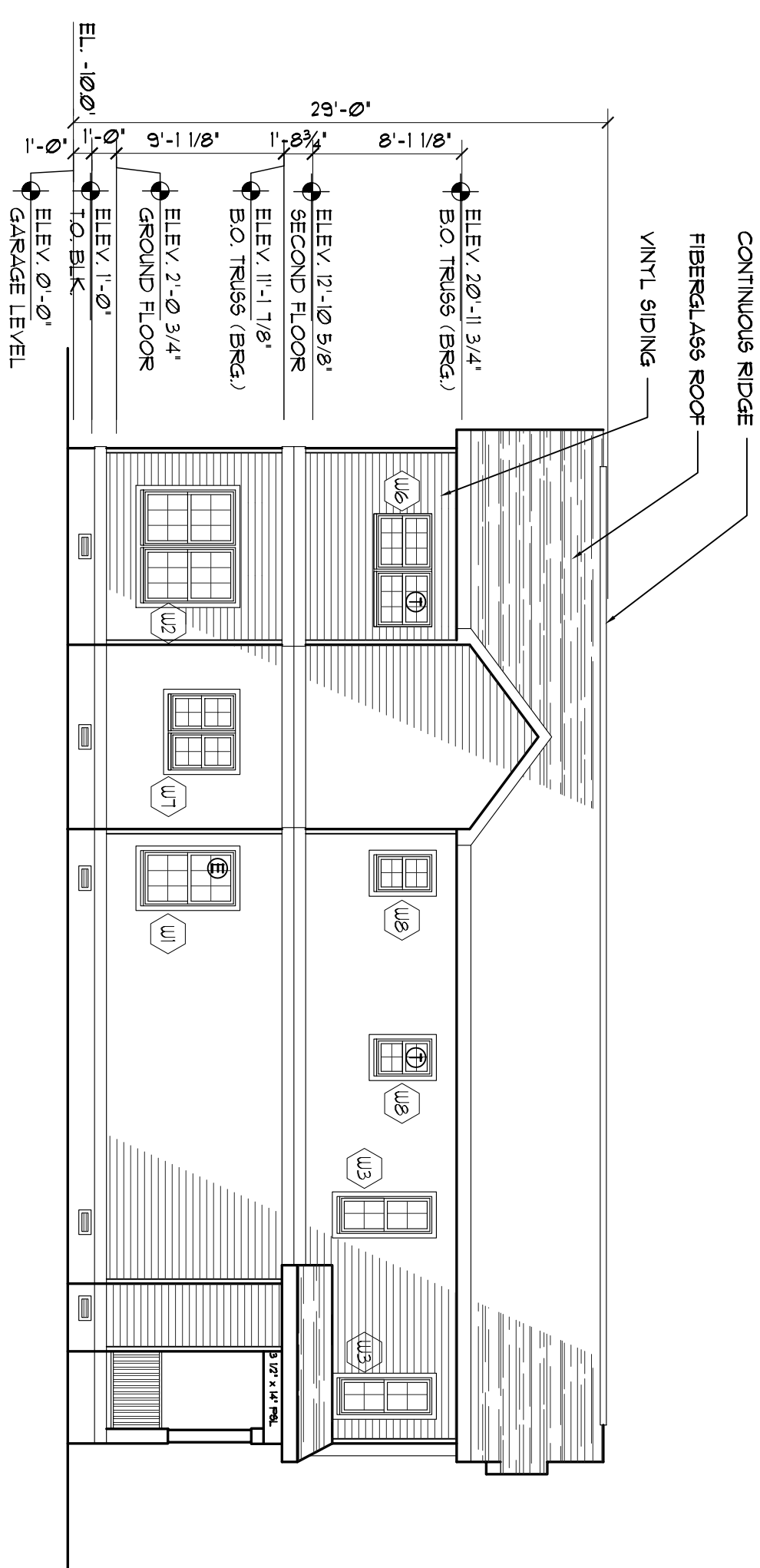
1 FRONT ELEVATION  
A-3 1/4"=1'-0"



2 REAR ELEVATION  
A-3 1/4"=1'-0"



3 SIDE ELEVATION  
A-3 1/8"=1'-0"



4 SIDE ELEVATION  
A-3 1/8"=1'-0"

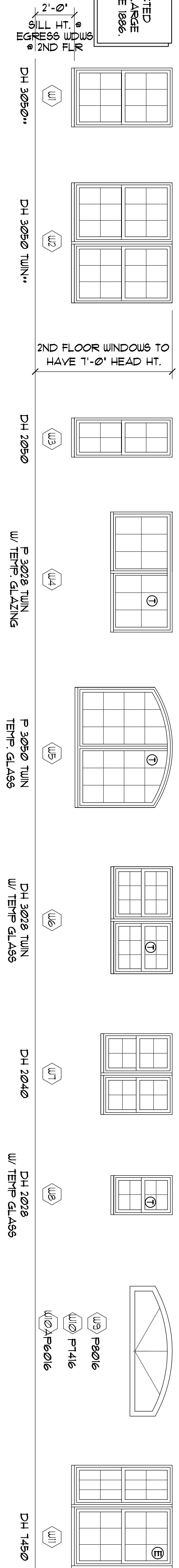
DOOR NUMBER	LABEL	SIZE (MIN)	COMMENTS
D1**	-	(2) 3'-0"x6'-8"	EXTERIOR DOOR / TEMPERED GLAZ
D2	-	8'-0" W x 7'-0" H	GARAGE DOOR
D3	1 HR	3'-0"x7'-0"	C LABEL
D4	-	2'-8"x6'-8"	EXTENSION DOOR W/ TEMP GLAZING
D5**	-	(2) 4'-0"x6'-8" SLIDER	LAUNDRY ROOM DOOR W/ LOWER
D6	-	2'-6"x6'-8"	CLOSET DOOR
D7	-	6'-0"x6'-8" SLIDER	CLOSET DOOR
D8	-	4'-0"x6'-8" SLIDER	CLOSET DOOR
D9	-	3'-6"x6'-8" B/HOLD	

\*\*IMPACT RESISTANT GLASS DOORS

ALL WINDOWS AND GLASS DOORS SHALL HAVE GLAZED OPENINGS PROTECTED FROM UNBORNE DEBRIS. GLAZED OPENINGS PROTECTED FROM UNBORNE DEBRIS SHALL MEET THE REQUIREMENTS OF ASTM E 1886. ALL WINDOW SILL HEIGHTS SHALL BE A MINIMUM SILL HEIGHT OF 24".

\*\* UNIT HEIGHTS OR EXCEEDS REQUIREMENTS OF AN EGRESS WINDOW  
IMPACT RESISTANT

PROVIDE HEADERS AS NOTED ON THE FRAMING PLANS. UNMARKED EXTERIOR OPENINGS SHALL RECEIVE THE FOLLOWING MINIMUM HEADERS:  
1ST FLOOR 2'-0" TO 3'-0" W  
2ND FLOOR 3'-0" TO 6'-0" W  
3RD FLOOR 3'-0" TO 6'-0" W  
4TH FLOOR 3'-0" TO 6'-0" W



4 WINDOW SCHEDULE  
A-3 1/4"=1'-0"

DESIGNED BY	SEAL	
DATE	REVISIONS	
NO.	DATE	REVISIONS
<p>PROPOSED SINGLE FAMILY RESIDENCE FOR <b>M. W. MITCHELL, INC.</b> 216 E. NASHVILLE AVE. WILDWOOD CREST, N.J.</p>		

**GARRAMONE ARCHITECTS, LLC**  
ARCHITECTS / PLANNERS  
51 GASKO ROAD  
MAYS LANDING, NJ 08330  
(609) 476-2977  
(609) 476-4425 (FAX)

DATE:	8/19/08	SHEET NO.	A-3
PROJ. NO.:	0730		
SCALE:	AS NOTED		